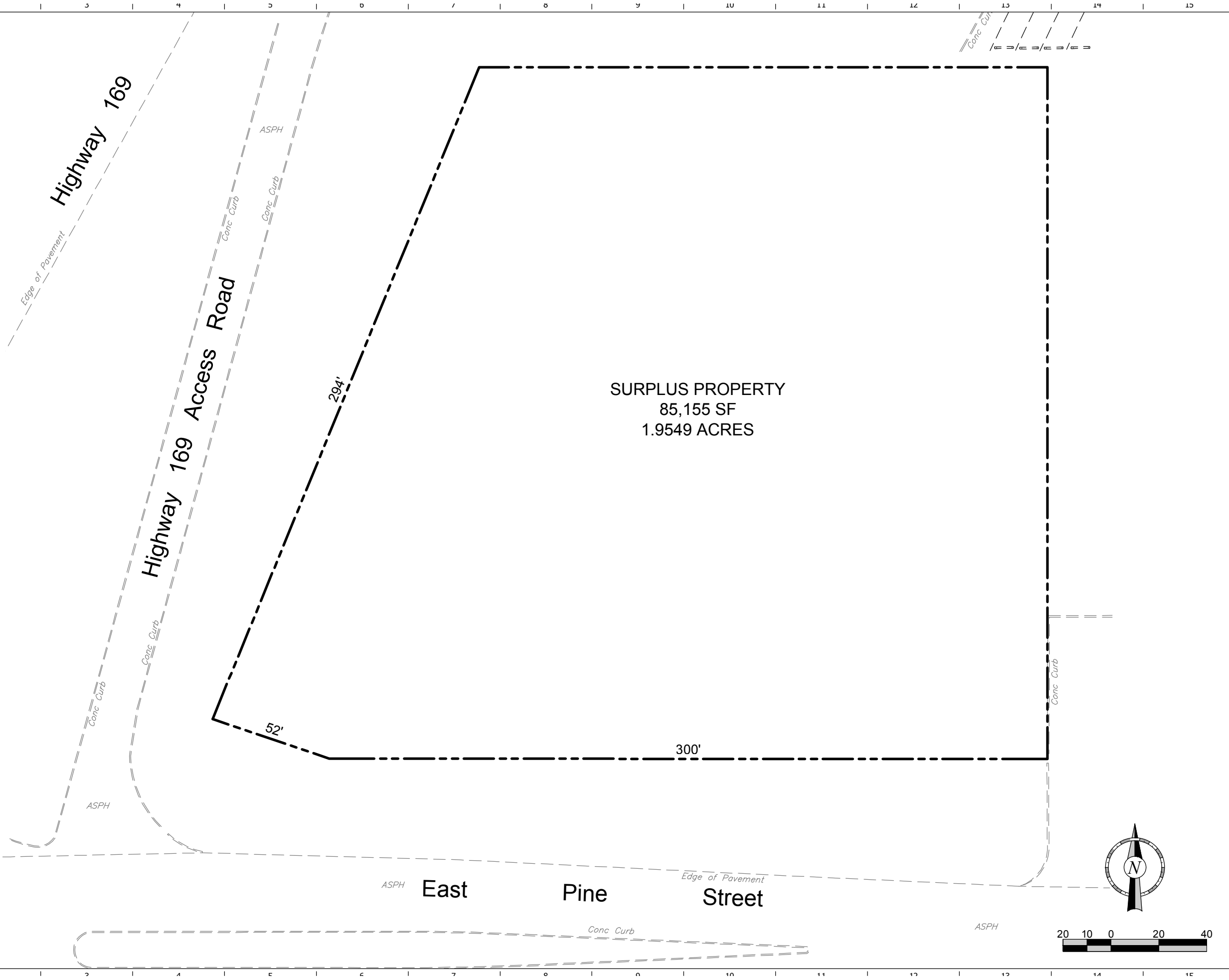


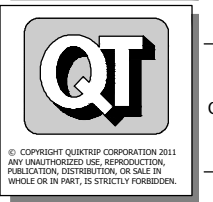
PROPERTY DESCRIPTION:

LOCATED NORTH OF THE NORTHWEST CORNER OF EAST PINE STREET AND HIGHWAY 169, TULSA, OKLAHOMA. THIS PROPERTY HAS APPROXIMATELY 352 FEET OF FRONTAGE ON PINE AND 294 FEET OF FRONTAGE ON 169. CONTAINS 85,155 SQUARE FEET, OR 1.9549 ACRES, MORE OR LESS.



PROJECT NO.:

QuikTrip No. 4054-1
 EAST PINE STREET & HIGHWAY 169
 TULSA, OK



PROTOTYPE: P-71 (05/01/12)
 DIVISION:
 VERSION: 001
 DESIGNED BY:
 DRAWN BY:
 REVIEWED BY:

REV	DATE	DESCRIPTION	ORIGINAL ISSUE DATE:

SHEET TITLE:
 SURPLUS PROPERTY

SHEET NUMBER:
 1